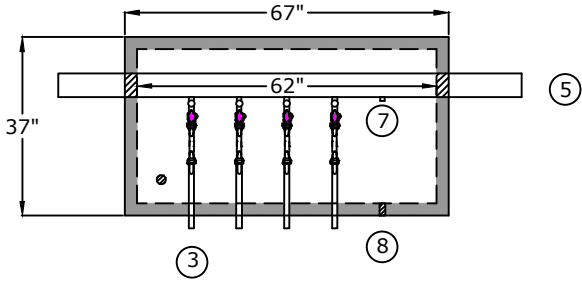
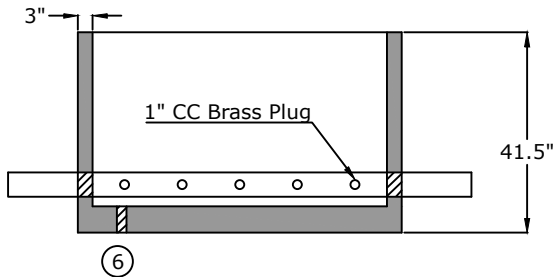


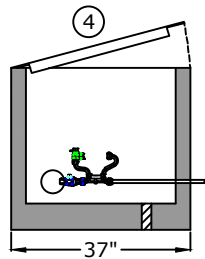
### Top View



### Side View

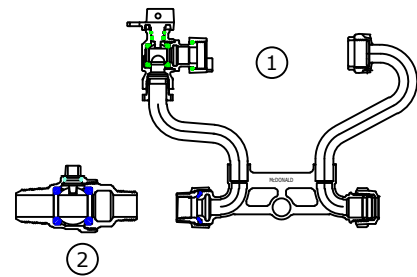


### End View

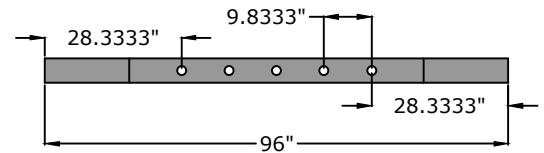


1. Meter Yoke  
A.Y. McDonald 720-412 TMMD44  
Full Port Ball Valve 360 Rotation  
Full Port Angled Dual Check
2. Corporation Stop  
A.Y. McDonald 7410BCAPF
3. 1" x 18" Brass Nipple
4. 29" x 59" opening single leaf  
aluminum door, pedestrian rated (300  
lb/ft<sup>2</sup>) S1R029059B
5. 4" Class 56 D.I.P.
6. 2" drain hole
7. (1) 1" CC Brass Plug
8. Core Hole for 5th Service

### Component Detail



### Pipe detail for taps



## Approved for Production

Project: \_\_\_\_\_ Date: \_\_\_\_\_

Quantity: \_\_\_\_\_ By: \_\_\_\_\_

# BARGER PRECAST

### Specifications

**Concrete:** 5,000 psi minimum strength (28 day)  
**Pipe Penetrations:** All pipe penetrations are placed according to job requirements.  
**Pipe Stands:** N/A  
**Sealant:** N/A  
**Steps:** N/A

## 4 Gang w/1 Plug 1" Meter Vault Consolidated Utility District

C.R. Barger & Sons, Inc.  
 P.O. Box 370 - Kingston TN 37763  
 Phone 888.882.5860 - BargerAndSons.com

Date: 11.172020

Drawn By: D. Lemasters

Approx. Empty Vault Weight: 3,100 lbs.