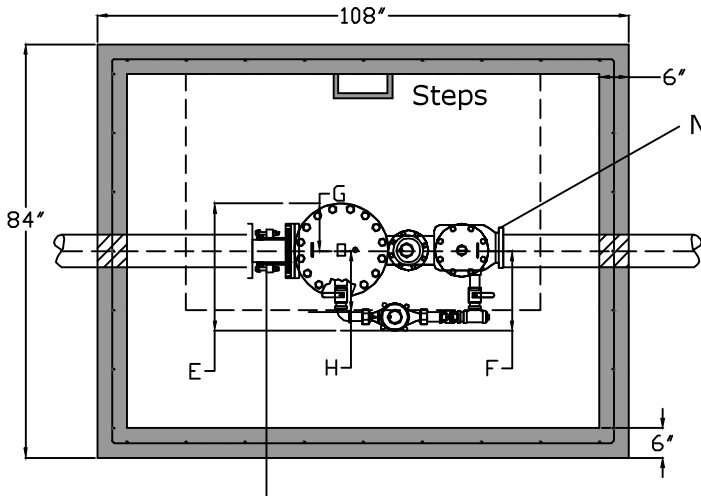


Top View



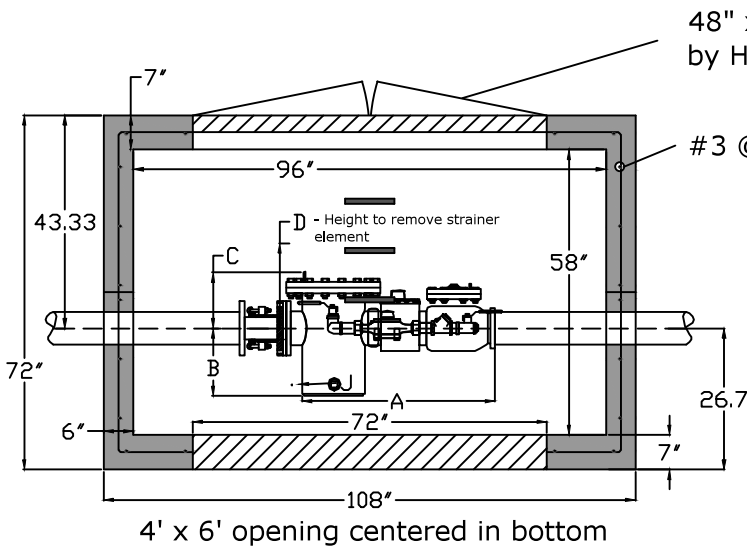
Smith-Blair 913 Flanged Coupling Adapter

Dimensions (inches)

Size	A	B	C	D	E	F	G
4"	33	10	10.75	17.5	22	15.25	6.75
6"	45	11 $\frac{1}{16}$	11 $\frac{3}{8}$	21.25	29	19.5	9.5
8"	53	11 $\frac{3}{16}$	13 $\frac{29}{64}$	25 $\frac{7}{8}$	34.25	21.75	12.5
10"	68	14 $\frac{3}{16}$	15	30 $\frac{1}{16}$	36.25	13.75	18

Size	H	I	J	Wt.
4"	12	2	2	215
6"	16	2	3	570
8"	17	3	3	765
10"	18	3	3	900

Side View



48" x 72" door H2W7248
by Halliday Products

#3 @ 12" O.C. Ea. Way

4' x 6' opening centered in bottom

Approved for Production

Project: _____

Quantity: _____

Date: _____

By: _____



C.R. Barger & Sons, Inc.
P.O. Box 370 - Kingston TN 37763
Phone 888.882.5860 - BargerAndSons.com

Specifications

- Concrete:** 5,000 psi minimum strength (28 day)
- Reinforcing:** Primary reinforcement will be a #3 rebar (Grade 60) rebar.
- Pipe Penetrations:** The inlet and outlet are fitted with solid seals that meet or exceed ASTM C923 (4" D.I.P. - 10" D.I.P.). All pipe penetrations are placed according to job requirements.
- Pipe Stands:** Adjustable height pipe stands will be provided to support assembly.
- Sealant:** Sealant used will meet or exceed ASTM C990.
- Steps:** Aligned under hatch unless specified.

8' x 6' Fire Protection Meter Vault City of Clarksville Standard (Non-Traffic)

Date: 8.272008

Drawn By: Eric Barger

Approx. Weight: 18,000 lbs.