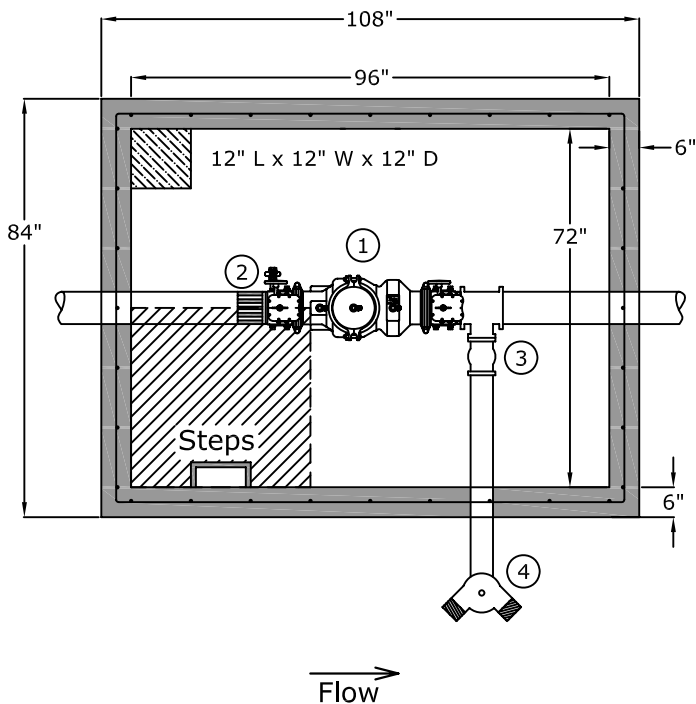
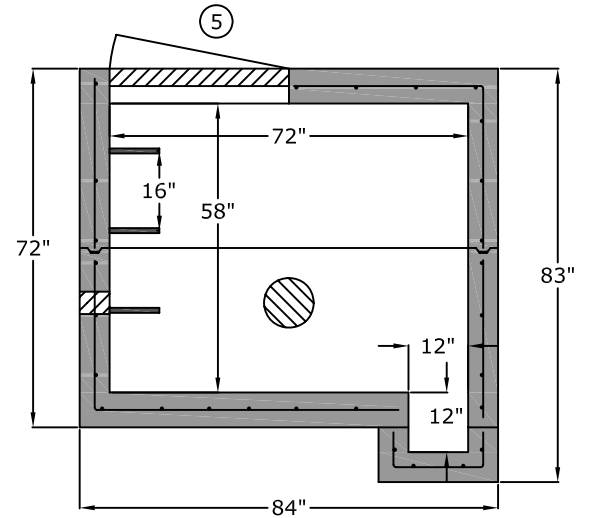


### Top View

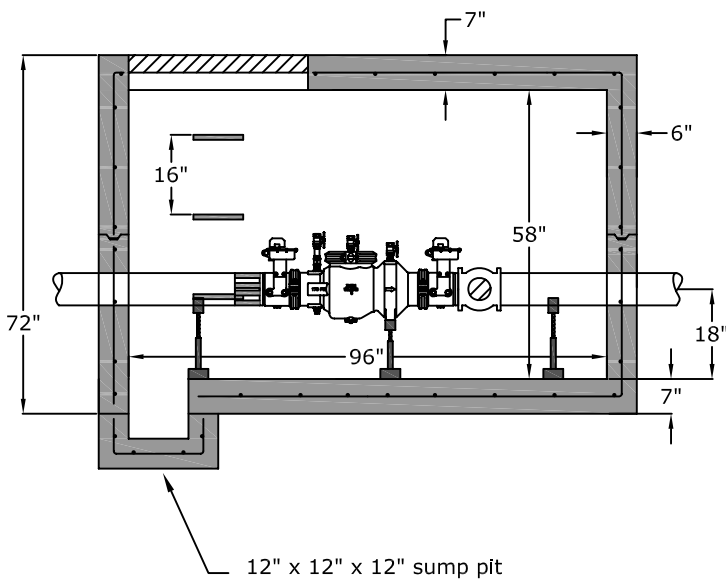


1. Wilkins Model 350A Double Check Valve Assembly
2. Restrained Flange Adapter
3. UL/FM 4" Swing Check Valve
4. 4" Siamese Connection
5. 36" x 36" Aluminum Hatch Cast-in-Place

### End View

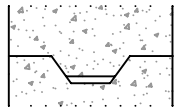


### Side View



### Joint Detail

Positive Lock Male/Female Keyway  
+- 0.005" tolerance



## Approved for Production

Project: \_\_\_\_\_

Quantity: \_\_\_\_\_

Date: \_\_\_\_\_

By: \_\_\_\_\_



C.R. Barger & Sons, Inc.  
P.O. Box 370 - Kingston TN 37763  
Phone 888.882.5860 - BargerAndSons.com

### Specifications

**Concrete:** 5,000 psi minimum strength (28 day)

**Pipe Penetrations:** The inlet and outlet are fitted with solid rubber seals that meet or exceed ASTM C923 (4" D.I.P. - 10" D.I.P.) when requested. All pipe penetrations are placed according to job requirements.

**Pipe Stands:** Adjustable height pipe stands will be provided to support assembly.

**Sealant:** Sealant used will meet or exceed ASTM C990.

**Steps:** Aligned under hatch unless specified.

## 8' x 6' Vault - 6"

## FT. Campbell DCV with FDC Connection

Date: 12.182008

Drawn By: Eric Barger

Approx. Vault Weight: 18,000 lbs.