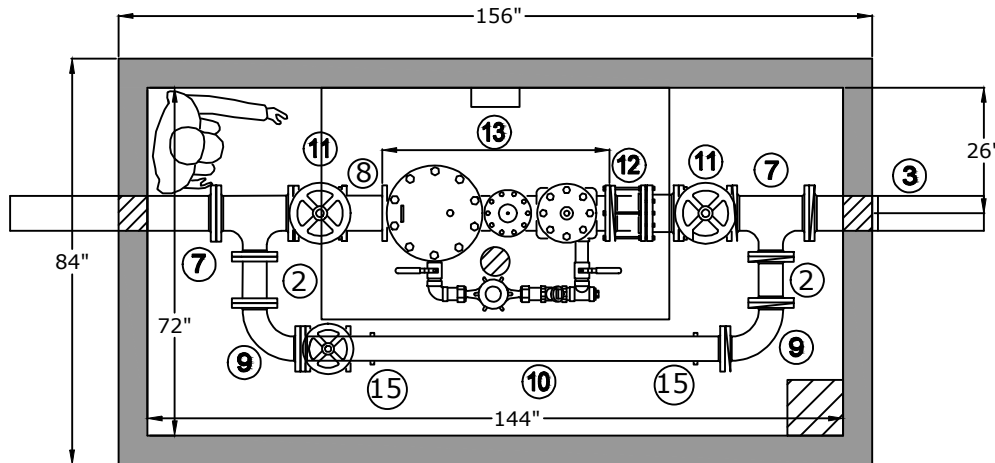


Top View



Notes

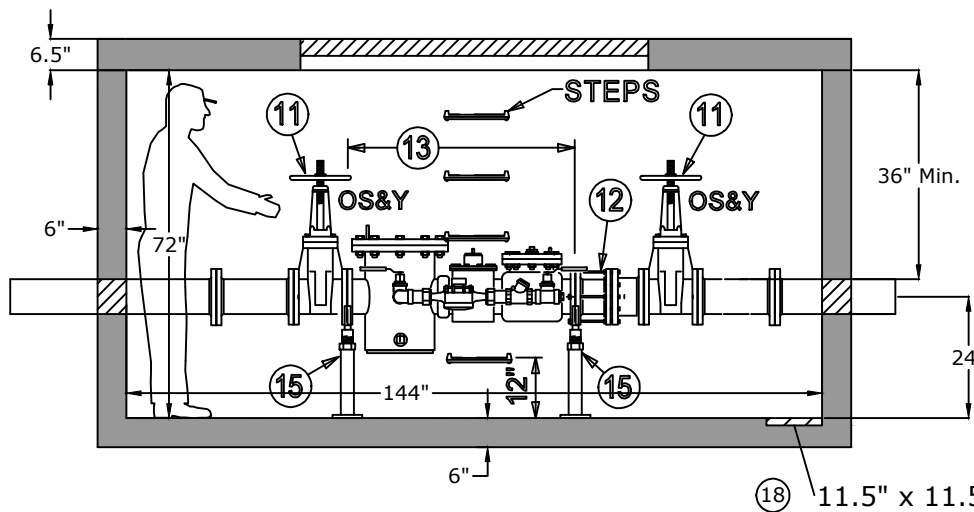
Top Weight - 7,000 lb  
Bottom Weight- 25,000 lb

- 2. 6" Flg x Flg. 1'-0" (2)
- 3. 6" Flg. x P.E. 6'-0" (2)
- 7. 6"x6" Flanged Tee (2)
- 8. 6" Flg. x Flg. 1'-8" (1)
- 9. 6" Flg. 90 (2)
- 10. 6" Flg. x Flg. TBD (1)
- 11. 6" Flg. OS&Y Gate Valve (3)
- 12. 6" Dismantling Joint (1)
- 13. 6" x 2" BadgerFSAA Fire Service Meter with Strainer (1)
- 14. 6" Flg. Acc (15)
- 15. Standon Model S-96 Cradle Support (3)
- 16. 6" Meter Box w/Base, Precast Concrete with Steps on 12" Center
- 17. Halliday Products Model H2W Access H-20 48"x48"
- 18. Sump pan

Side View

Flow →

48" x 48" Aluminum Hatch



Approved for Production

Project: \_\_\_\_\_

Date: \_\_\_\_\_

Quantity: \_\_\_\_\_

By: \_\_\_\_\_

**BARGER**  
**PRECAST**

Specifications

**Concrete:** 5,000 psi minimum strength (28 day)  
**Reinforcing:** Primary reinforcement will be a #3 rebar (Grade 60) rebar. An H-20 traffic version is available.  
**Pipe Penetrations:** The inlet and outlet are fitted with solid seals (4" D.I.P. - 10" D.I.P.) unless otherwise specified. All pipe penetrations are placed according to job requirements.  
**Sealant:** Sealant used will meet or exceed ASTM C990.  
**Steps:** If required, the steps will be aligned under hatch unless specified.

**6' W x 12' L x 6' T I.D. Fire Line w/6" Bypass**  
**City of LaVergne**

C.R. Barger & Sons, Inc.  
P.O. Box 370 - Kingston TN 37763  
Phone 888.882.5860 - BargerAndSons.com

Date: 6.092017

Drawn By: Eric Barger

Approx. Vault Weight: See above