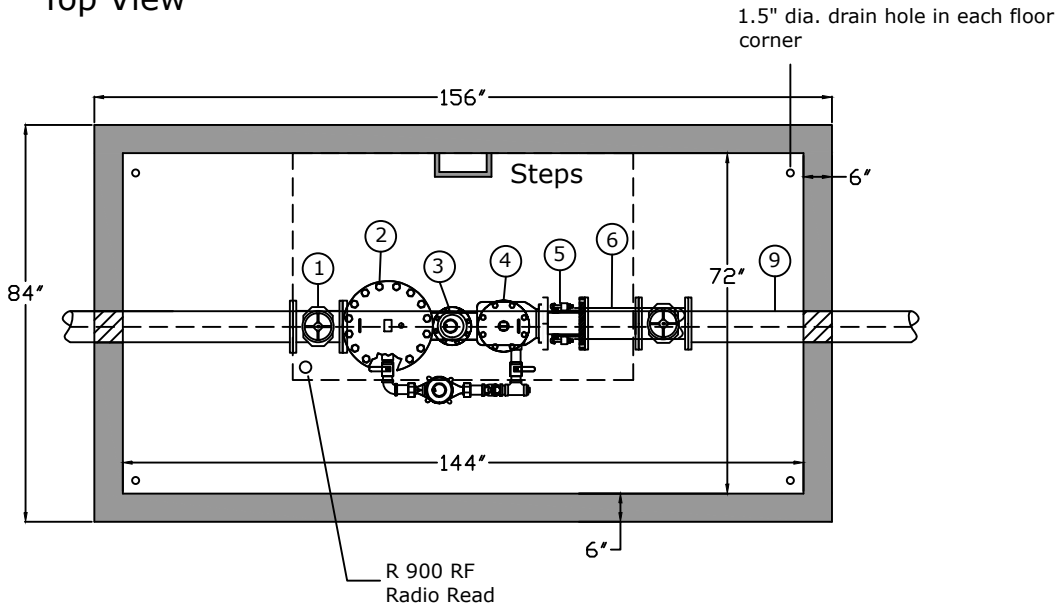


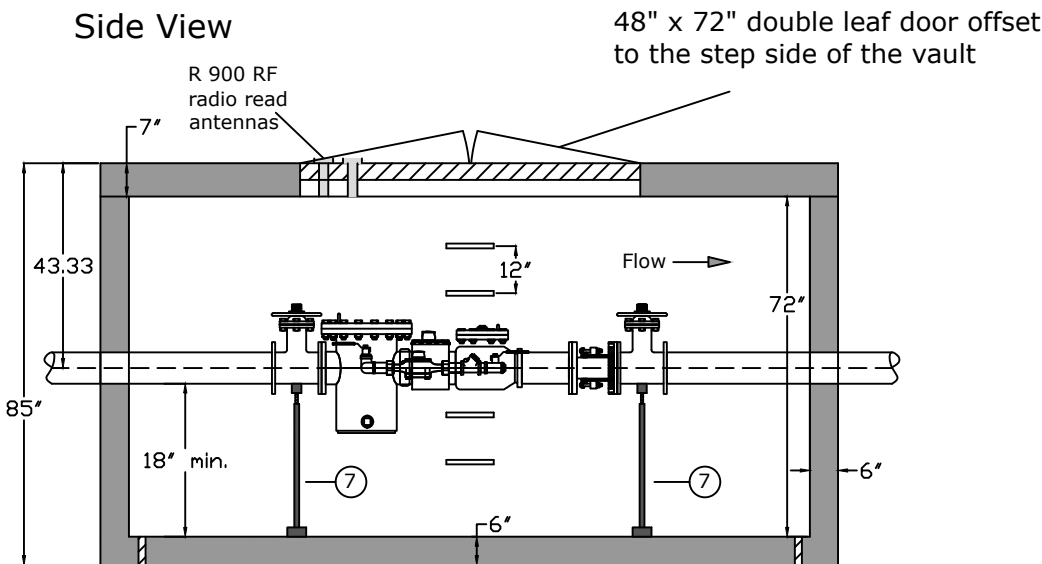
**Top View**



**Notes**

- 1. 8" OSY Flg gate valve
- 2. 8" ULFM strainer
- 3. 8" Neptune HP Protectus III SS Gal E-Coder R900I meter
- 4. 8" check valve
- 5. 8" Romac restrained flange coupling adapter
- 6. 8" Flg x Pe 1'-0"
- 7. 8" stand-on pipe supports
- 8. Halliday W2S7248 hatch
- 9. 8" Flg x Pe 6'-0"
- 10. 8" flange accessories (5)
- 11. Four 1-1/2" dia. hole in each corner for drainage into gravel beneath vault
- 12. Contractor to drill two 2" openings in hatch for antenna mounting

**Side View**



**Weights**

- Lid - 7700 lb.
- Bottom - 23,000 lb.

**Approved for Production**

Project: \_\_\_\_\_

Date: \_\_\_\_\_

Quantity: \_\_\_\_\_

By: \_\_\_\_\_



**Specifications**

- Concrete:** 5,000 psi minimum strength (28 day)
- Reinforcing:** Primary reinforcement will be a #3 rebar (Grade 60) rebar.
- Pipe Penetrations:** All pipe penetrations are placed according to job requirements.
- Pipe Stands:** Adjustable height pipe stands will be provided to support assembly.
- Sealant:** Sealant used will meet or exceed ASTM C990.
- Steps:** Aligned under hatch unless specified.

**12' x 6' x 6' Eight Inch Fire Service Meter  
Mallery Valley Utility District**

C.R. Barger & Sons, Inc.  
P.O. Box 370 - Kingston TN 37763  
Phone 888.882.5860 - BargerAndSons.com

Date: 12.192016

Drawn By: Eric Barger

Approx. Weight: See above